

# NOTICE TO MARINERS



## 2021 Geophysical and Geotechnical surveys for Kitty Hawk Offshore Wind Rev 03 - Issued: 2021-11-05

Mariners are advised that survey vessels and equipment will be used in the proposed offshore Export Cable Routes and Kitty Hawk Offshore Wind lease area through November and December 2021.

The surveys will be performed by Ocean Infinity America, MMT and Geodynamics on behalf of Avangrid Renewables using survey vessels Deep Helder and Island Champion.



Vessel: DEEP HELDER  
Call sign: PBYU  
IMO: 9690872  
Owner: Seamar  
GSM: +31 61 90 06 277  
Email: [bridge.helder@seamar.nl](mailto:bridge.helder@seamar.nl)  
VHF: 13 & 16

Vessel: Island Champion  
Call sign: C6BW2  
IMO: 9366598  
Owner: Island Offshore  
GSM: +44 79 20 53 96 91  
Email: [bridge@champion.islandoffshore.com](mailto:bridge@champion.islandoffshore.com)  
VHF: 13 & 16



During the survey the vessels will be deploying subsurface survey equipment along the survey area and will be restricted in their ability to manoeuvre. Approaching vessels are requested to pass at a safe speed and a distance of 0.5 nautical miles.

# NOTICE TO MARINERS



Vessel: RV Benthos  
Owner: Geodynamics  
GSM: +1 443 880 0668  
Email: james@geodynamicsgroup.com  
VHF: 13 & 16



Vessel: RV Substantial  
IMO: USZ00221D013  
Owner: Geodynamics  
GSM: +1 443 880 0668  
Email: aron@geodynamicsgroup.com  
VHF: 13 & 16

# NOTICE TO MARINERS



## **Project Description**

Continuing through November and December 2021 - The offshore geophysical survey will be conducted by Ocean Infinity/MMT vessels Deep Helder and Island Champion and nearshore by Geodynamics vessel Benthos on behalf of Avangrid Renewables.

Mariners are advised to keep a safety clearance to the vessel of no less than 0.5 nautical miles.

## **Port of Operation**

Deep Helder will continue to operate from Norfolk, Virginia.

Island Champion will continue to operate from Norfolk, Virginia.

Benthos is a 12 hr daily operation from Morehead City, N Carolina.

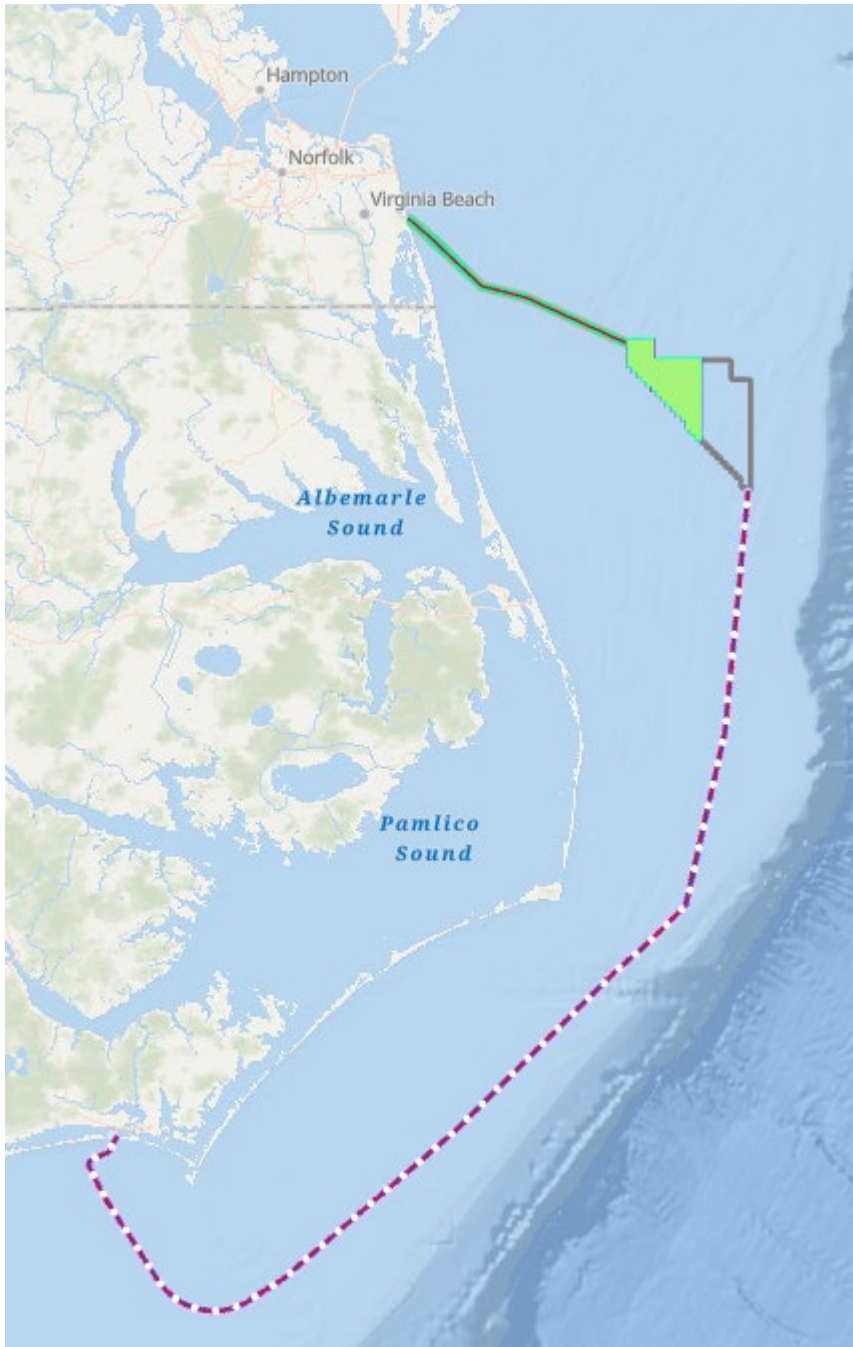
Substantial is a 12/24 hr operation from Norfolk, Virginia.

## **Key Contact Details:**

Further enquiries should be addressed to the following people in the following order:

1. Martin Godfrey (MMT Project Manager), T: +44 7590 51 51 14, [martin.godfrey@mmt.se](mailto:martin.godfrey@mmt.se)
2. Andy Sherrell (OIA Project Manager), T: +1 321 591 9575, [andy.sherrell@oceaninfinity.com](mailto:andy.sherrell@oceaninfinity.com)
3. Kalle Flink (MMT Operations – Deep Helder), T: +46 708 11 28 43, [kalle.flink@mmt.se](mailto:kalle.flink@mmt.se)

# NOTICE TO MARINERS



*Figure 1 – Overview of the planned survey areas*

# NOTICE TO MARINERS



## **Distribution List:**

[cgd5waterways@uscg.mil](mailto:cgd5waterways@uscg.mil)  
[Gregory.c.goetz2@uscg](mailto:Gregory.c.goetz2@uscg)  
[Andrew.m.flynn@uscg.mil](mailto:Andrew.m.flynn@uscg.mil)