

The Kitty Hawk Offshore Wind project will deploy meteorological equipment as early as May 25, 2020 approximately 42.8 nautical miles SE of the Rudee Inlet sea buoys and 38.6 nautical miles NE of the Oregon Inlet sea buoys. The equipment consists of a surface buoy platform and a bottom mounted platform and associated anchors, moorings and marker buoys. The equipment houses instruments that will collect data for site assessment activities. The equipment is expected to remain deployed through 2021.

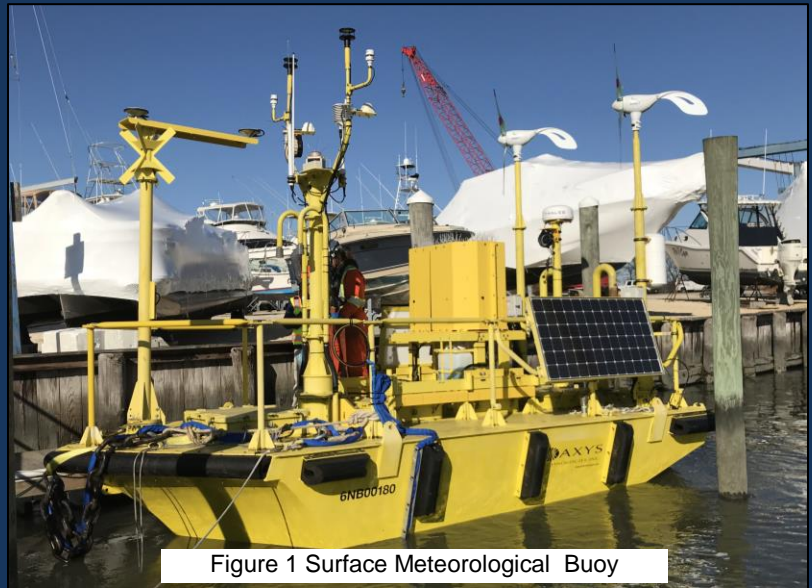


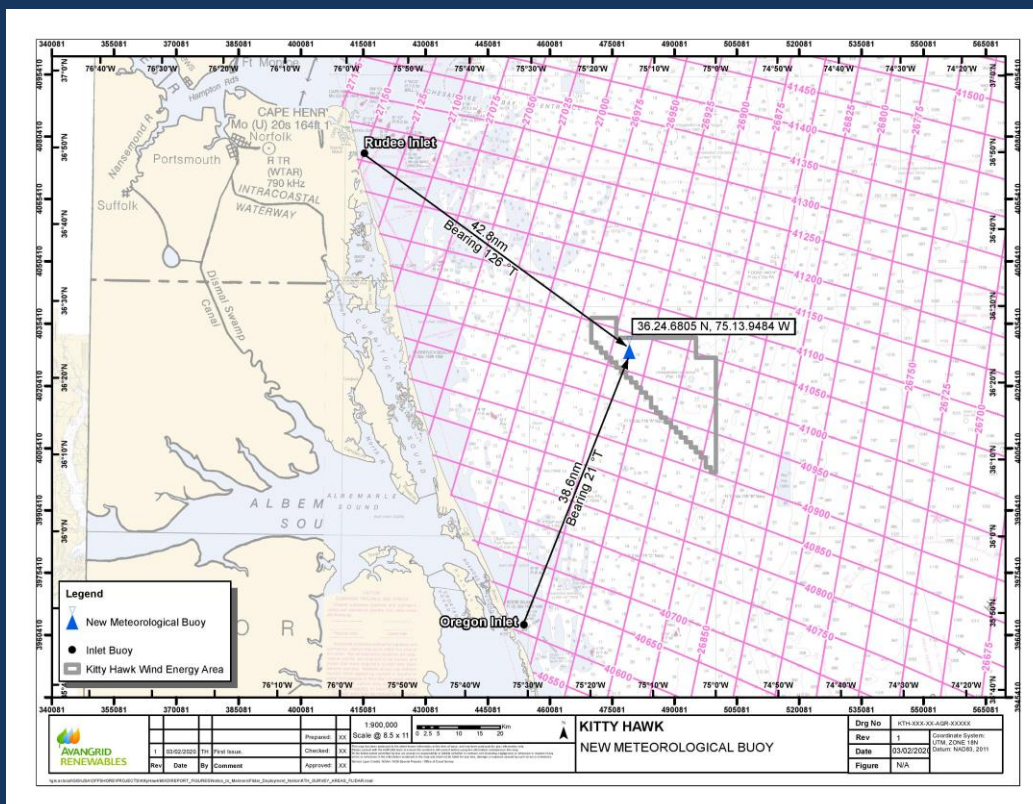
Figure 1 Surface Meteorological Buoy

Fishermen and mariners should note the location of the buoy, and are encouraged to enter the buoy latitude and longitude coordinates in chartplotters, as follows:

Location	Lat/Lon (DD.MM.MMM)	Approximate TDs Loran C 9960 chain
Surface Buoy	36.24.6805 N; 75.13.9484 W	26942.5 41033
Bottom Mounted Platform	36.24.6397 N; 75.13.8209 W	26941.5 41032



Figure 2 Bottom Mounted Platform



### Buoy Location

42.8 Nautical Miles  
SE of Rudee Inlet  
Sea Buoy  
(RW "RI")  
38.6 Nautical Miles  
NE of Oregon Inlet  
Sea Buoy  
(RW "OI")

Please Contact  
Rick Robins  
Fisheries Liaison  
757.876.3778  
rick@fathomedgelimited.com

Or Visit  
kittyhawkoffshore.com

1. *Can I fish around the equipment?* Yes, but please be cautious of the surface buoy and bottom mounted platform moorings which are identified with lighted marker buoys. Anchoring and trawling within 250 meters of the surface buoy is discouraged.
2. *How long will the buoy be deployed?* The surface buoy and bottom mounted platform are expected to remain deployed through 2021.
3. *How is the buoy arrangement marked for safety?* The surface buoy is lighted and equipped with an AIS transponder and cameras for security. Both polyethylene marker buoys are lighted as well.
4. *What is the purpose of the buoy?* The surface buoy will collect environmental data, including wind speed, wind direction, wave motion, humidity, temperature, etc. as part of the site assessment for the Kitty Hawk offshore wind lease area.
5. *Can I moor to or board the buoy?* Mooring and boarding are prohibited in order to promote safety and protect the meteorological equipment.

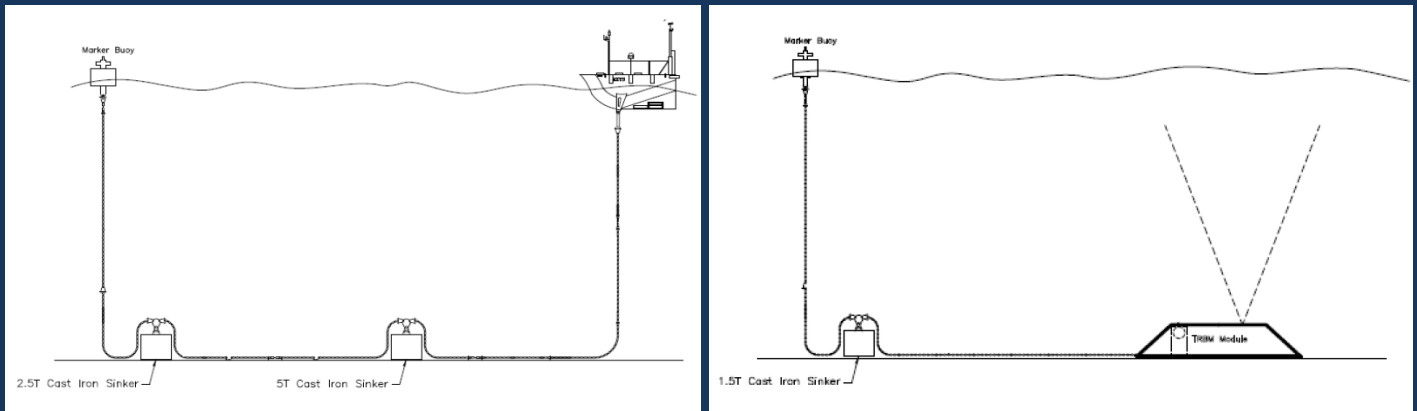


Figure 3 Anchor arrangements for Surface Meteorological Buoy and Bottom Mounted Platform

## Offshore Survey Work Continues Through 2020

The 170' survey vessel M/V Gerry Bordelon will continue conducting high resolution bathymetric and geophysical surveys of the Kitty Hawk offshore wind lease area and cable corridor through 2020. The vessel may be towing survey equipment up to 1,000' astern and a 0.5 NM clearance is requested. Commercial fishermen planning to deploy tended drop-nets, drop-pots, and mobile gear in the wind lease area should contact Rick Robins, Fisheries Liaison, at 757.876.3778 to coordinate. Commercial fishing vessels can call the survey vessel directly to communicate while in the survey area on a bridge-to-bridge basis on VHF 16 & 13.



Figure 4 M/V Gerry Bordelon